



High-Performance Packaged Boiler

Australia's largest certified
package boiler company.



**The Environmental
Group Limited**
Engineering a Sustainable Future

The Environmental Group Limited

www.environmental.com.au

Working across the **Circular** **Economy**

Our Purpose

Engineering a sustainable future.

Our Mission

To enable our clients to contribute to a cleaner environment by safely delivering pivotal solutions while generating value for our shareholders, staff, and partner industries.

Our Team

Our local experts are dedicated to reducing waste and boosting energy performance. Trusted worldwide to provide the highest standards of service and support.

Tomlinson Energy Services

Part of The Environmental Group

Tomlinson Energy Services is Australia's leading provider of packaged boiler solutions, delivering the highest combustion efficiency to keep operating costs low and performance high.

We specialise in custom design, installation, commissioning, and national servicing and repairs, complemented by our 24/7 emergency support.

With offices and a dedicated service team across Australia, Tomlinson Energy Services ensures boilers operate at peak performance for maximum efficiency and reliability.





Offering Industry Leading Boilers

Fulton radically challenges the industry status quo resulting in game-changing new boiler designs including the VSRT Boiler and the ENDURA+ boiler, culminating in more than 25 new patents worldwide.

Fulton has maintained a reputation for quality and excellence since 1949. From Steam and Hydronic boilers to Thermal Fluid Heaters and Custom Engineered Systems, Fulton has a product for virtually any industrial or commercial heating application.



ENDURA XE CONDENSING HYDRONIC BOILER

ENDURA XE[®]

Condensing Firetube
Hydronic Boiler

399,000 – 6 Million BTU/HR

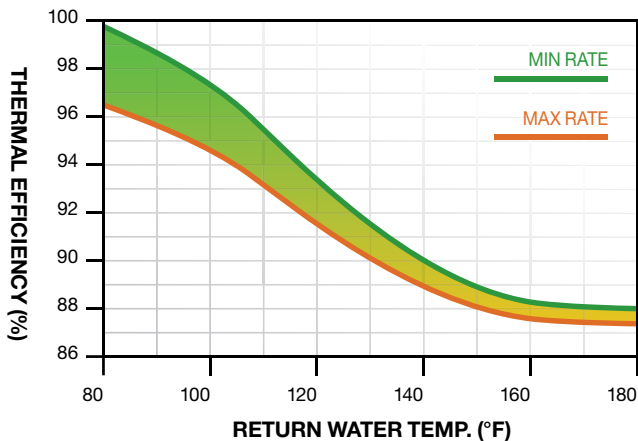


- ▶ Up to 15:1 Turndown
- ▶ Flame-by-Wire[™] Combustion
- ▶ Real-Time O₂ Compensation[™]



HEAVY-HITTER FOR ENERGY SAVINGS

Hundreds of thousands of installations around the world rely on Fulton's legendary rugged and reliable boilers. Like all Fulton products, the ENDURA XE is built to last and delivers leading-edge efficiencies and utility savings.



Reduce Fuel Costs & Emissions

The ultra-high efficiency heat exchanger and fuel-saving burner reduce carbon emissions by 15% and NOx emissions by 80% compared to conventional boilers.

Simplify Your Installation

Fully electronic combustion controls use Flame-by-Wire™ technology. This installer friendly system is simpler to learn and operate, significantly reducing commissioning time and complexity.

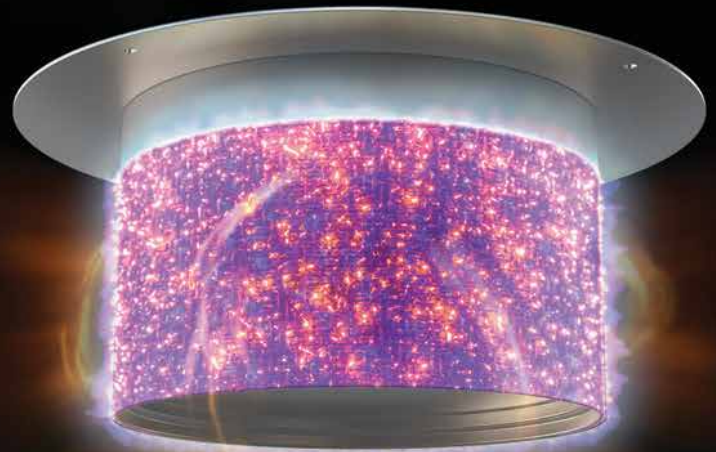
Trusted Long-Life Durability

Firetube architecture is recognized for superior dependability and ease of installation. The ENDURA XE envelops tubes within a large volume of water, eliminating costly buffer tanks and primary-secondary piping.

LOW MAINTENANCE RELIABLE BURNER

Fulton combines environmentally friendly low NOx emissions with the rugged durability of industrial-grade equipment. Burner maintenance has never been simpler.

- ▶ **Simpler Maintenance & Lower Cost of Ownership**
- ▶ **Even Tube Heat Loading for a Longer Lasting Heat Exchanger**
- ▶ **Exceptional Durability with Low NOx Emissions**



FIRETUBE TECHNOLOGY

The ENDURA XE™ is engineered and built to the same rugged reliability standards as Fulton's heavy-duty industrial boilers. Superior construction materials and water management make the ENDURA XE last longer, even in the most demanding applications.

- ▶ **Protects Against Scale & Corrosion**
- ▶ **Built-in Buffer Reduces Cycling**
- ▶ **Lower Pump Head Requirements**



- ▶ **Supercharged Heating**

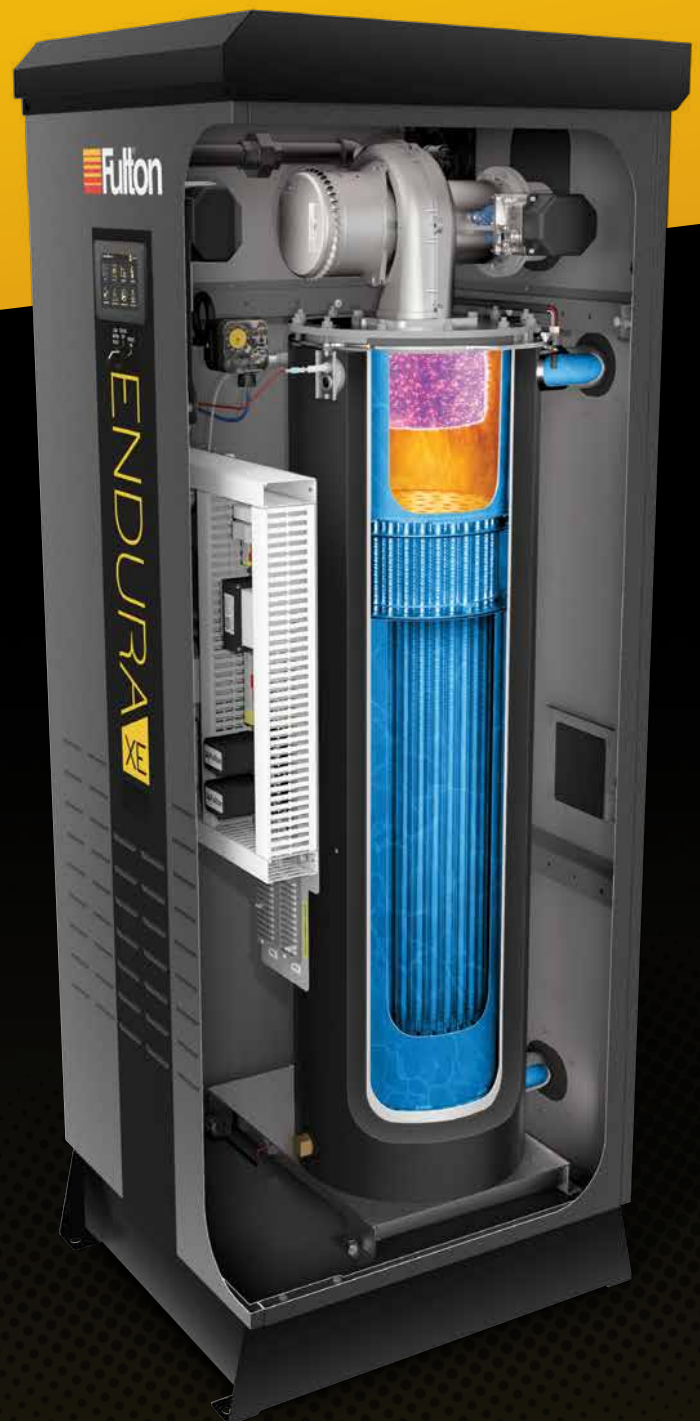
ENDURA XE packs more performance into a smaller package, keeping your building efficiently and reliably heated while saving valuable space in the mechanical room.

- ▶ **Stainless Heat Exchanger**

Type 439 stainless steel features 68% greater strength than 316L and is immune to chloride stress corrosion cracking, a catastrophic mode of failure seen with boilers using 304 and 316L.

- ▶ **Long-Lasting Durability**

Innovative water baffle technology prevents scale from forming, ensuring a long-lasting and efficient heat exchanger. This maximizes heating comfort and lowers lifetime fuel costs.



PURE™ CONTROL

Complexity Simplified

Fulton's powerful yet intuitive PURE Control™ provides rapid access to operating details and configuration. It efficiently sequences up to 10 boilers and eliminates the need for a master boiler or standalone panel. When a boiler is powered off, the plant seamlessly transitions to the next available stage for reliable heating.

- ▶ Outdoor Reset with Setback Mode
- ▶ Motorized Isolation Valve Control
- ▶ Variable Speed Pump Control
- ▶ Saves Energy by Reducing Cycling
- ▶ ModBus / BACnet Configurable

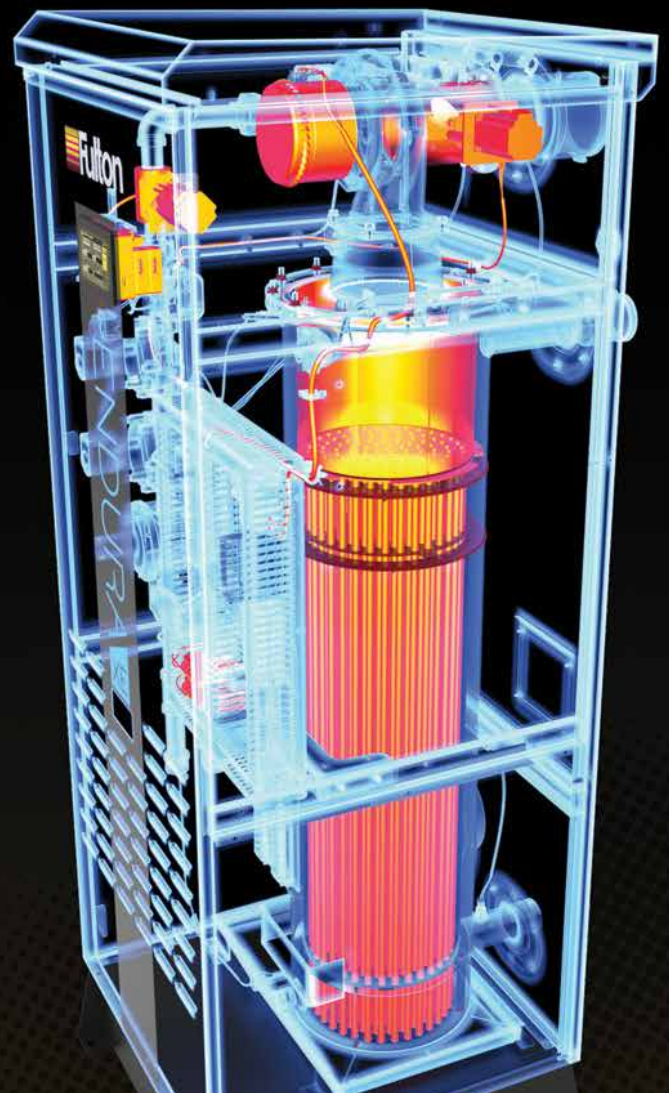


FLAME BY WIRE™

Combustion Technology

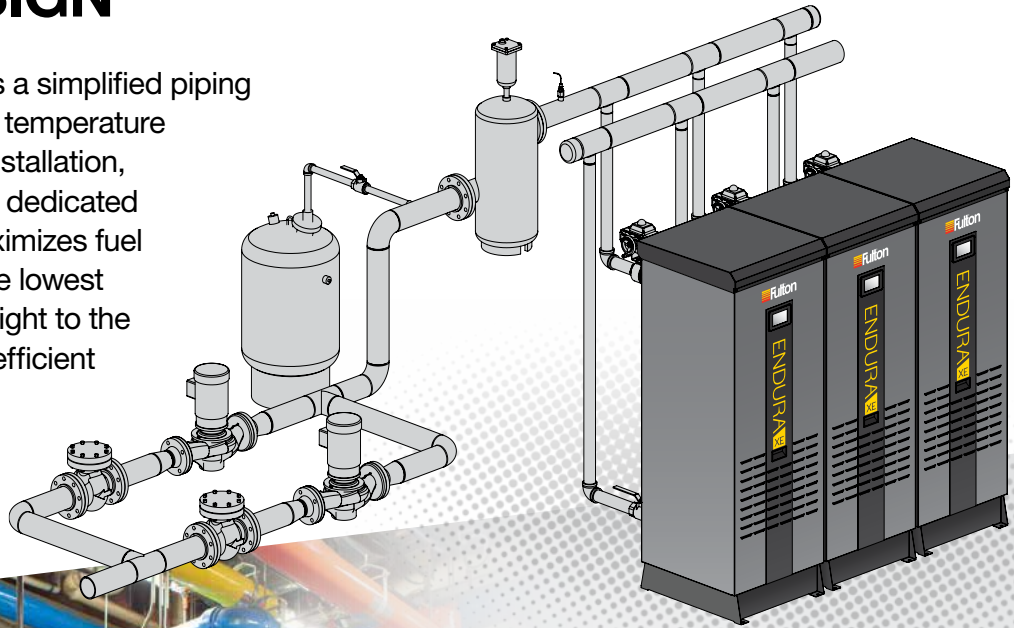
Inspired by advances in automotive and aviation, Flame-by-Wire™ technology replaces the use of conventional pneumatic ("neg-reg") and mechanical linkage systems with a modern system of independent air and gas valves. Real-time O2 Compensation™ continuously tunes the burner air-fuel ratio, automatically optimizing for seasonality.

- ▶ Simplifies Start-Up & Maintenance
- ▶ Maximizes Condensing Operation
- ▶ Reduces Fuel Bills & Emissions



VARIABLE PRIMARY FLOW DESIGN

Variable primary flow is a simplified piping method that enhances temperature comfort, streamlines installation, eliminates the need for dedicated boiler pumps, and maximizes fuel savings by directing the lowest temperature water straight to the boiler inlet, avoiding inefficient blending in a primary-secondary manifold.

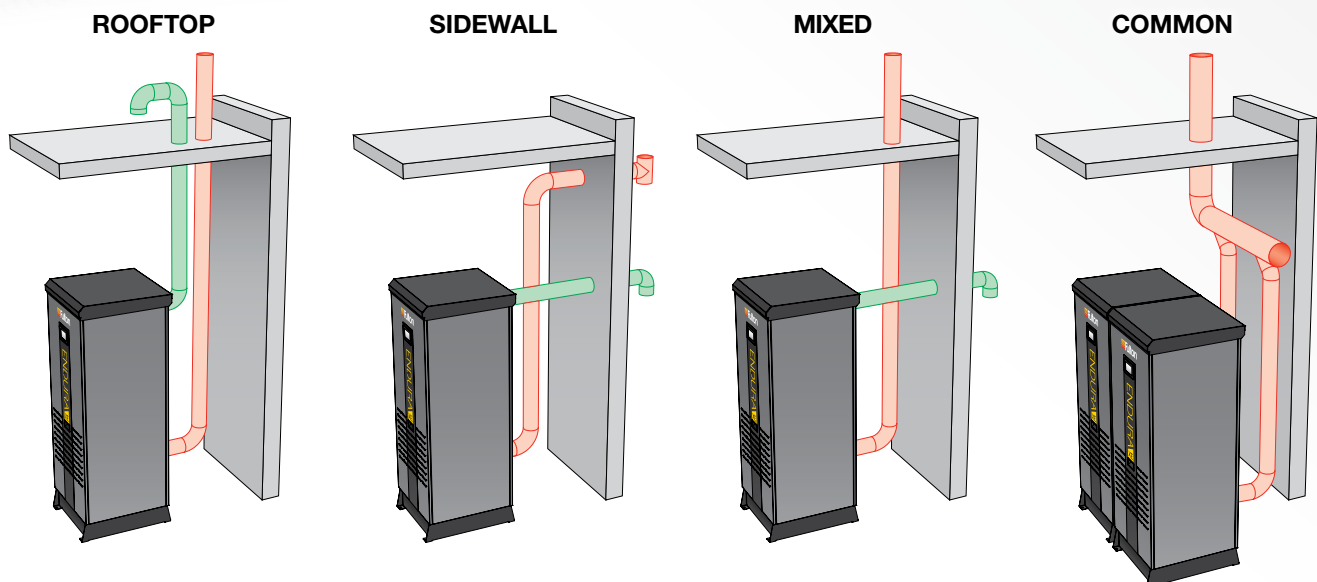


Compact Design

A compact footprint with zero side clearance makes the ENDURA XE an excellent choice for both retrofit and new construction, freeing up valuable mechanical room space.

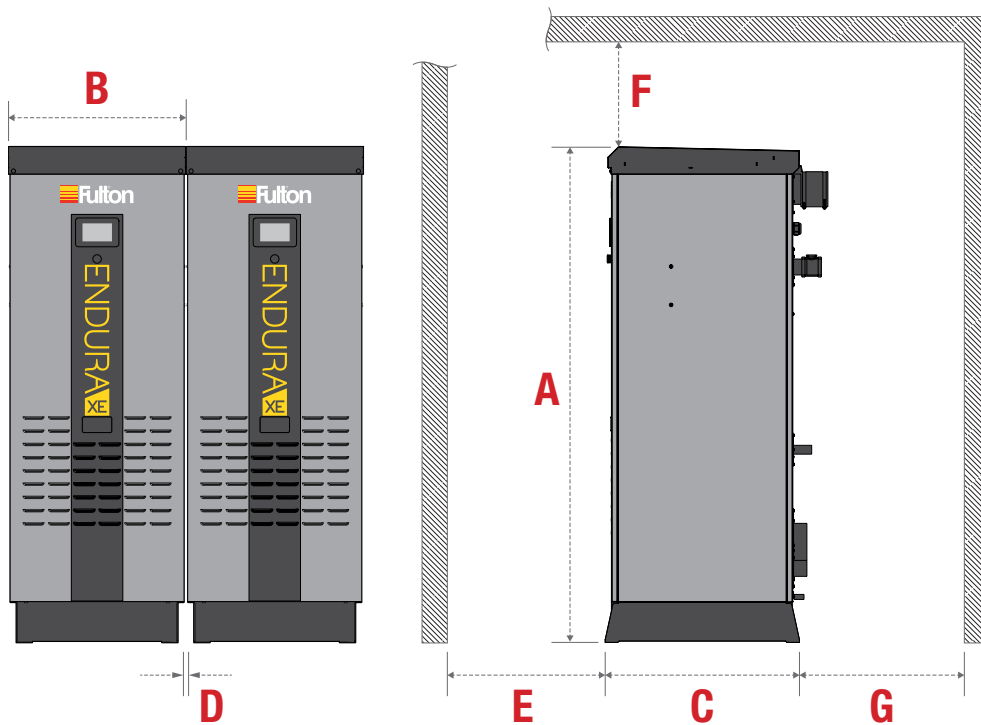
Flexible Venting Arrangements

Design supports 16 different combinations of venting including sidewall or rooftop, room air or sealed combustion, plastic or stainless flue materials, and manifolded common venting.



SPECIFICATIONS & DIMENSIONS

MODEL EXE-		399	500	650	750	1000	1500	2000	2500	3000	4000	5000	6000
SPECIFICATIONS													
Input Capacity	MBH	399	500	650	750	1,000	1,500	2,000	2,500	3,000	4,000	5,000	6,000
Water Content	GAL	10.4	10.4	17.9	17.9	24.8	24.8	42.4	54.9	54.9	166	166	166
Pressure Drop at 20°F ΔT	PSI	1.2	2.0	1.4	1.9	1.2	2.8	2.3	1.7	2.5	2.6	4.0	5.8
Operating Weight	LBS	537	537	674	674	1,301	1,325	1,779	2,072	2,072	5,740	5,740	5,740
Electrical Requirements	V/PH	120/1	120/1	120/1	120/1	120/1	120/1	120/1	240/1	240/1	460/3	460/3	460/3
AHRI Thermal Efficiency	%	98.0	97.3	96.3	96.0	97.8	97.6	97.5	97.3	97.2	96.8	96.5	96.2
Turndown Ratio		8:1	10:1	13:1	15:1	15:1	15:1	15:1	15:1	15:1	10:1	13:1	15:1
DIMENSIONS													
(A) Height	IN	73.7	73.7	73.7	73.7	79	79	79.3	79.3	79.3	79	79	79
(B) Width	IN	26.3	26.3	26.3	26.3	29.4	29.4	32.8	32.8	32.8	34	34	34
(C) Base Depth	IN	28.9	28.9	28.9	28.9	36	36	41.8	41.8	41.8	103.5	103.5	103.5
CLEARANCES													
(D) Sides	IN	0	0	0	0	0	0	0	0	0	0 & 24	0 & 24	0 & 24
(E) Front	IN	24	24	24	24	30	30	32	32	32	36	36	36
(F) Top	IN	16	16	16	16	12	12	12	12	12	18	18	18
(G) Rear	IN	12	12	12	12	24	24	24	24	24	36	36	36



NOTES:

- Specifications and dimensions are approximate and for reference only. Fulton practices continuous product improvement and reserves the right to change specifications and/or dimensions without notice.
- Dimensions represent locations from which service clearances are measured, refer to end assembly drawings for overall dimensions.
- * Compared to DOE minimum requirements



Commercial &
Industrial Facilities



Education



Military Bases &
Government
Facilities



Healthcare

Contact Us



Maximising Energy Efficiencies for a Sustainable Future

admin@egl.com.au

www.environmental.com.au

03 9541 8699

Office Locations



Melbourne

Tomlinson Energy Services
Suite 2.01 | Level 2
315 Ferntree Gully Road
Mount Waverley VIC 3149

P: 03 8560 0416

E: energyservice.melbourne@tomlinsonenergy.com.au

Sydney

Tomlinson Energy Services
A2, 26 Power Road
Seven Hills NSW 2417

P: 02 9681 4177

E: energyservice.sydney@tomlinsonenergy.com.au

Brisbane

Tomlinson Energy Services
1/48 Commerce Circuit
Yatala QLD 4207

P: 07 3462 0159

E: energyservice.brisbane@tomlinsonenergy.com.au

South Australia

Tomlinson Energy Services
26 Phillips Street
Thebarton SA 5031

P: 08 8297 9688

E: energyservice.adelaide@tomlinsonenergy.com.au

Western Australia

Tomlinson Energy Services
40 Sorbonne Crescent
Canning Vale WA 6155

P: 08 9455 5511

E: energyservice.perth@tomlinsonenergy.com.au



**The Environmental
Group Limited**
Engineering a Sustainable Future