



# High-Performance Packaged Boiler

Australia's largest certified  
package boiler company.



**The Environmental  
Group Limited**  
*Engineering a Sustainable Future*

The Environmental Group Limited

[www.environmental.com.au](http://www.environmental.com.au)

# Working across the **Circular** **Economy**

## Our Purpose

Engineering a sustainable future.

## Our Mission

To enable our clients to contribute to a cleaner environment by safely delivering pivotal solutions while generating value for our shareholders, staff, and partner industries.

## Our Team

Our local experts are dedicated to reducing waste and boosting energy performance. Trusted worldwide to provide the highest standards of service and support.

# Tomlinson Energy Services

*Part of The Environmental Group*

Tomlinson Energy Services is Australia's leading provider of packaged boiler solutions, delivering the highest combustion efficiency to keep operating costs low and performance high.

We specialise in custom design, installation, commissioning, and national servicing and repairs, complemented by our 24/7 emergency support.

With offices and a dedicated service team across Australia, Tomlinson Energy Services ensures boilers operate at peak performance for maximum efficiency and reliability.





# Offering Industry Leading Boilers

**Fulton** radically challenges the industry status quo resulting in game-changing new boiler designs including the VSRT Boiler and the ENDURA+ boiler, culminating in more than 25 new patents worldwide.

Fulton has maintained a reputation for quality and excellence since 1949. From Steam and Hydronic boilers to Thermal Fluid Heaters and Custom Engineered Systems, Fulton has a product for virtually any industrial or commercial heating application.



# FBX HORIZONTAL WATERTUBE BOILER

## FBX

### Flexible Watertube Boiler (Steam or Hot Water)

31 – 920 BHP

- ▶ Lowest Cost of Ownership
- ▶ Best-in-Class Efficiency
- ▶ Versatile Burner Choices



#### STEAM MODELS:

1000 - 30,000 lbs/h Output F&A 212°F  
ASME Section I & IV Designs to 300 PSI

#### HOT WATER MODELS:

1MM - 32MM BTU/hr  
ASME Section I & IV Designs

FACTORY PACKAGED  
OR FIELD ERECT



**Biofuel  
READY**  
*Up to B100*

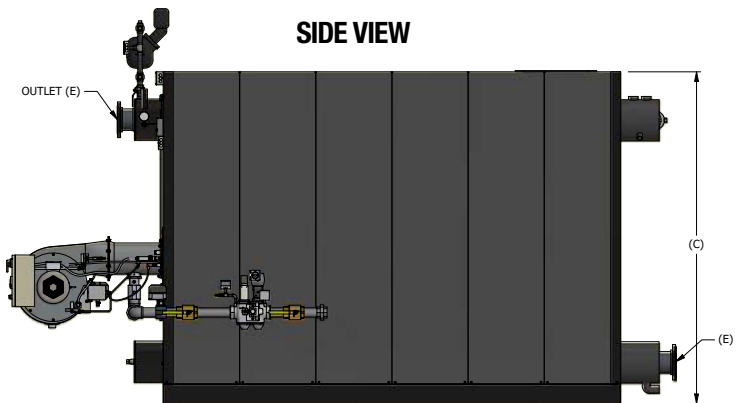


**Hydrogen  
READY**  
*Up to 20% Blend*

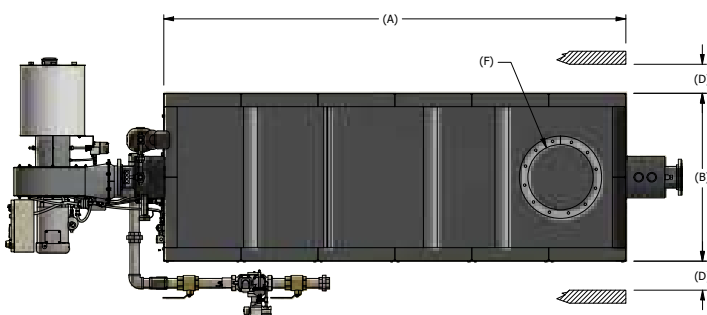
# HIGH PRESSURE STEAM MODELS

MODEL	SPECIFICATIONS						DIMENSIONS (INCHES)					
	INPUT (BTU/HR)	OUTPUT (BTU/HR)	OUTPUT (LBS/HR)	BHP	SHIPPING WEIGHT (LBS)	OPERATING WEIGHT (LBS)	BASE LENGTH (A)	BASE WIDTH (B)	HEIGHT (C)	SIDE CLEARANCE (D)	STEAM OUTLET (E)	FLUE (F)
FBX-0100-HP	1,250,000	1,013,000	1,000	31	4,170	4,640	51.25	35.5	76.6	18	1.5	8
FBX-0150-HP	1,750,000	1,418,000	1,400	43	4,665	5,235	63.25	35.5	79.6	18	2	8
FBX-0200-HP	2,200,000	1,782,000	1,760	53	5,530	6,210	63.25	39.5	83.6	22	2.5	10
FBX-0250-HP	2,750,000	2,228,000	2,200	67	6,200	7,000	72.25	39.5	83.6	22	2.5	10
FBX-0300-HP	3,000,000	2,430,000	2,400	73	6,700	7,560	72.25	43.5	88.6	26	3	12
FBX-0350-HP	3,750,000	3,038,000	3,000	91	7,090	8,020	78.25	43.5	88.6	26	3	12
FBX-0400-HP	4,300,000	3,463,000	3,440	104	7,700	8,735	87.25	43.5	88.6	26	3	14
FBX-0500-HP	5,400,000	4,374,000	4,320	131	9,300	10,710	99.25	45.5	92.8	28	3	14
FBX-0600-HP	6,250,000	5,063,000	5,000	151	10,200	11,760	111.25	45.5	92.8	28	4	16
FBX-0700-HP	7,235,000	5,860,000	5,787	175	11,280	13,040	120.5	47.5	95.8	30	4	18
FBX-0800-HP	8,270,000	6,699,000	6,615	200	12,785	14,645	120.6	51.5	102.8	34	4	18
FBX-0900-HP	9,300,000	7,533,000	7,439	225	13,600	15,655	129.6	51.5	102.8	34	4	20
FBX-1000-HP	10,330,000	8,367,000	8,262	250	14,850	17,095	141.6	51.5	102.8	34	6	20
FBX-1200-HP	12,400,000	10,044,000	9,918	300	17,250	19,905	159.6	55.5	106.8	38	6	22
FBX-1400-HP	14,470,000	11,720,000	11,574	350	18,590	21,480	174.9	55.5	106.8	38	6	24
FBX-1600-HP	16,530,000	13,390,000	13,220	400	20,720	23,940	186.9	59.5	106.8	42	6	24
FBX-1800-HP	18,600,000	15,066,000	14,757	450	23,500	27,545	186.7	65.5	115.3	48	6	26
FBX-2000-HP	20,670,000	16,743,000	16,533	500	26,100	30,555	195.9	71.5	115.3	54	8	26
FBX-2500-HP	25,000,000	20,250,000	19,997	605	31,800	38,300	204	84	136.8	70	8	28
FBX-3000-HP	34,000,000	27,540,000	27,194	823	49,050	58,790	237-7/8	102	158.4	76	8	30
FBX-3500-HP	38,000,000	30,780,000	30,395	920	55,000	66,270	266	102	167.4	76	8	32

**SIDE VIEW**



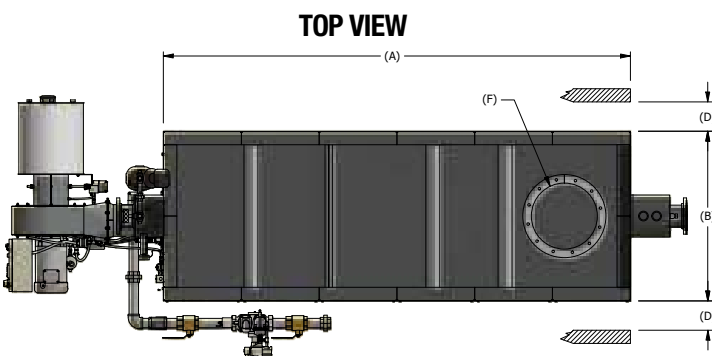
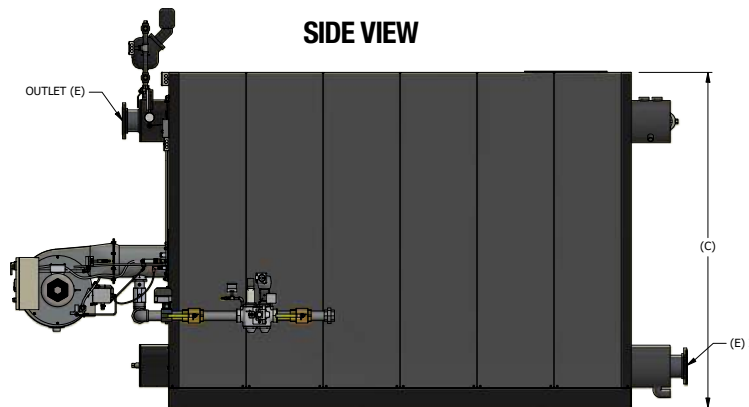
**TOP VIEW**



**NOTE:** Specifications and dimensions are approximate and for reference only. Fulton practices continuous product improvement and reserves the right to change specifications and/or dimensions without notice.

# LOW PRESSURE STEAM MODELS

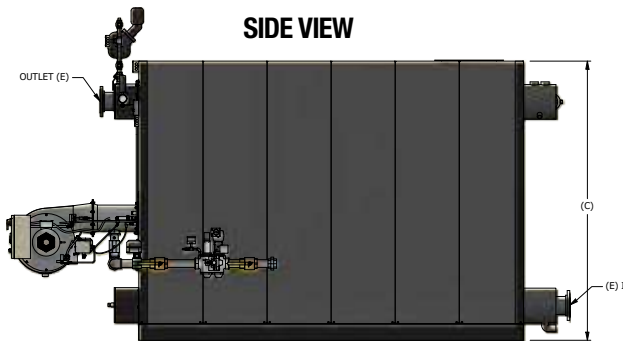
MODEL	SPECIFICATIONS						DIMENSIONS (INCHES)					
	INPUT	OUTPUT	OUTPUT	BHP	SHIPPING WEIGHT	OPERATING WEIGHT	BASE LENGTH	BASE WIDTH	HEIGHT	SIDE CLEARANCE	STEAM OUTLET	FLUE
	(BTU/HR)	(BTU/HR)	(LBS/HR)		(LBS)	(LBS)	(A)	(B)	(C)	(D)	(E)	(F)
FBX-0100-LP	1,250,000	1,037,000	1,068	31	3,910	4,380	51.25	35.5	76.6	18	2	8
FBX-0150-LP	1,750,000	1,453,000	1,497	43	4,370	4,940	63.25	35.5	79.6	18	2.5	8
FBX-0200-LP	2,200,000	1,826,000	1,880	54	5,250	5,930	63.25	39.5	83.6	22	3	10
FBX-0250-LP	2,750,000	2,280,000	2,350	68	5,810	6,610	72.25	39.5	83.6	22	3	10
FBX-0300-LP	3,000,000	2,490,000	2,565	74	6,300	7,160	72.25	43.5	88.6	26	3	12
FBX-0350-LP	3,750,000	3,110,000	3,205	93	6,660	7,590	78.25	43.5	88.6	26	4	12
FBX-0400-LP	4,300,000	3,570,000	3,675	106	7,235	8,270	87.25	43.5	88.6	26	4	14
FBX-0500-LP	5,400,000	4,480,000	4,616	134	8,780	10,190	99.25	45.5	92.8	28	4	14
FBX-0600-LP	6,250,000	5,187,000	5,345	155	9,660	11,220	111.25	45.5	92.8	28	6	16
FBX-0700-LP	7,235,000	6,005,000	6,185	179	10,700	12,460	120.5	47.5	95.8	30	6	18
FBX-0800-LP	8,270,000	6,864,000	7,070	205	12,190	14,050	120.6	51.5	102.8	34	6	18
FBX-0900-LP	9,300,000	7,719,000	7,950	230	13,000	15,055	129.6	51.5	102.8	34	6	20
FBX-1000-LP	10,330,000	8,574,000	8,831	256	14,200	16,445	141.6	51.5	102.8	34	8	20
FBX-1200-LP	12,400,000	10,292,000	10,600	307	16,500	19,155	159.6	55.5	106.8	38	8	22
FBX-1400-LP	14,470,000	12,010,000	12,370	358	17,800	20,690	174.9	55.5	106.8	38	8	24
FBX-1600-LP	16,530,000	13,720,000	14,131	410	19,900	23,120	186.9	59.5	106.8	42	8	24
FBX-1800-LP	18,600,000	15,438,000	15,900	461	22,600	26,645	186.7	65.5	115.3	48	10	26
FBX-2000-LP	20,670,000	17,156,000	17,670	512	25,100	29,555	195.9	71.5	115.3	54	10	26
FBX-2500-LP	25,000,000	20,750,000	21,372	620	30,300	36,800	204	84	136.8	70	10	28
FBX-3000-LP	34,000,000	28,220,000	29,065	843	47,100	57,830	237-7/8	102	158.8	76	12	30
FBX-3500-LP	38,000,000	31,540,000	32,486	942	53,250	63,790	266	102	167.4	76	12	32



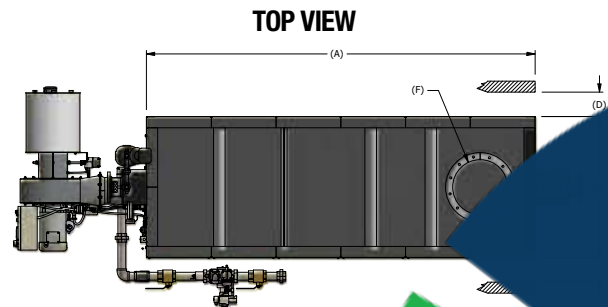
**NOTE:** Specifications and dimensions are approximate and for reference only. Fulton practices continuous product improvement and reserves the right to change specifications and/or dimensions without notice.

# HOT WATER MODELS

MODEL	SPECIFICATIONS					DIMENSIONS (INCHES)					
	INPUT (BTU/HR)	OUTPUT (BTU/HR)	OUTPUT (LBS/HR)	SHIPPING WEIGHT (LBS)	OPERATING WEIGHT (LBS)	BASE LENGTH (A)	BASE WIDTH (B)	HEIGHT (C)	SIDE CLEARANCE (D)	WATER INLET/ OUTLET (E)	FLUE (F)
FBX-0100-HW	1,250,000	1,062,000	32	3,290	3,790	51	35.5	71.5	18	2.5	8
FBX-0150-HW	1,750,000	1,488,000	45	3,800	4,380	63	35.5	71.5	18	2.5	8
FBX-0200-HW	2,200,000	1,870,000	56	4,400	5,035	63	39.5	76	22	3	10
FBX-0250-HW	2,750,000	2,338,000	70	5,000	5,750	72	39.5	76	22	3	10
FBX-0300-HW	3,000,000	2,550,000	76	5,600	6,410	72	43.5	80.5	26	4	12
FBX-0350-HW	3,750,000	3,188,000	95	6,100	6,985	78	43.5	80.5	26	4	12
FBX-0400-HW	4,300,000	3,655,000	109	6,800	7,800	87	43.5	80.5	26	4	14
FBX-0500-HW	5,400,000	4,590,000	137	8,200	9,660	99	45.5	85	28	5	14
FBX-0600-HW	6,250,000	5,313,000	159	9,000	10,625	111	45.5	85	28	5	16
FBX-0700-HW	7,235,000	6,150,000	184	10,000	11,820	121	47.5	87	30	5	18
FBX-0800-HW	8,270,000	7,030,000	210	11,400	13,650	121	51.5	95	34	6	18
FBX-0900-HW	9,300,000	7,905,000	236	12,140	14,580	130	51.5	95	34	6	20
FBX-1000-HW	10,330,000	8,780,000	262	13,200	15,870	142	51.5	95	34	6	20
FBX-1200-HW	12,400,000	10,540,000	315	15,480	18,625	160	55.5	99	38	6	22
FBX-1400-HW	14,470,000	12,300,000	367	16,600	20,100	175	55.5	99	38	8	24
FBX-1600-HW	16,530,000	14,050,000	420	18,800	22,680	187	59.5	101	42	8	24
FBX-1800-HW	18,600,000	15,810,000	472	20,960	25,210	187	65.5	106.5	48	8	26
FBX-2000-HW	20,670,000	17,570,000	525	22,700	27,290	196	71.5	106.5	54	8	26
FBX-2500-HW	25,000,000	21,250,000	635	28500	35,000	204	84	129.4	60	10	28
FBX-3000-HW	34,000,000	28,900,000	863	43160	53,880	238	102	147.5	76	10	30
FBX-3500-HW	38,000,000	32,300,000	965	49000	61,340	266	102	157.5	76	12	32



**SIDE VIEW**



**TOP VIEW**

**NOTE:** Specifications and dimensions are approximate and for reference only. Fulton practices continuous product improvement and reserves the right to change specifications and/or dimensions without notice.

# Contact Us



Maximising Energy Efficiencies for a Sustainable Future

[admin@egl.com.au](mailto:admin@egl.com.au)

[www.environmental.com.au](http://www.environmental.com.au)

03 9541 8699

## Office Locations



### Melbourne

Tomlinson Energy Services  
Suite 2.01 | Level 2  
315 Ferntree Gully Road  
Mount Waverley VIC 3149

P: 03 8560 0416

E: [energyservice.melbourne@tomlinsonenergy.com.au](mailto:energyservice.melbourne@tomlinsonenergy.com.au)

### Sydney

Tomlinson Energy Services  
A2, 26 Power Road  
Seven Hills NSW 2417

P: 02 9681 4177

E: [energyservice.sydney@tomlinsonenergy.com.au](mailto:energyservice.sydney@tomlinsonenergy.com.au)

### Brisbane

Tomlinson Energy Services  
1/48 Commerce Circuit  
Yatala QLD 4207

P: 07 3462 0159

E: [energyservice.brisbane@tomlinsonenergy.com.au](mailto:energyservice.brisbane@tomlinsonenergy.com.au)

### South Australia

Tomlinson Energy Services  
26 Phillips Street  
Thebarton SA 5031

P: 08 8297 9688

E: [energyservice.adelaide@tomlinsonenergy.com.au](mailto:energyservice.adelaide@tomlinsonenergy.com.au)

### Western Australia

Tomlinson Energy Services  
40 Sorbonne Crescent  
Canning Vale WA 6155

P: 08 9455 5511

E: [energyservice.perth@tomlinsonenergy.com.au](mailto:energyservice.perth@tomlinsonenergy.com.au)



**The Environmental  
Group Limited**  
*Engineering a Sustainable Future*